

### **Product Highlights**

- 2 port AMC 4G Fibre Channel adapter
- 1, 2 or 4 Gb/s per port
- Full driver support

### **Key Applications**

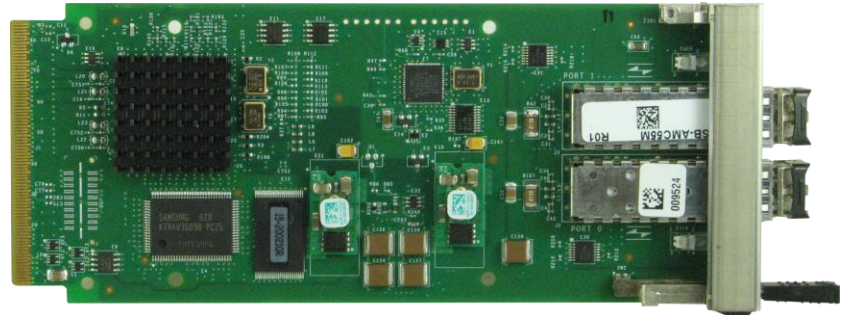
- SAN Connectivity
- AdvancedTCA or MicroTCA based system designs

### **Features**

- Two independent 4 Gb Fibre Channels
- SFP, supports multi-mode optics and copper options
- 8 Lane PCI Express Backplane Connection
- Auto-negotiation for legacy connect (1 or 2 Gbit)
- Single Width (AMC.0) Mid or Full Size Height
- AMC.0 or AMC.3 Compliant
- Software supports switch and loop (private and public) topologies
- Supports all major OSs

### **Regulatory**

- RoHS 6/6
- IEC60950, EN60950
- EN55022, EN55024
- FCC, VCCI, EN5022 (Class A)
- Designed For NEBs compliance



## **AdvancedMC™**

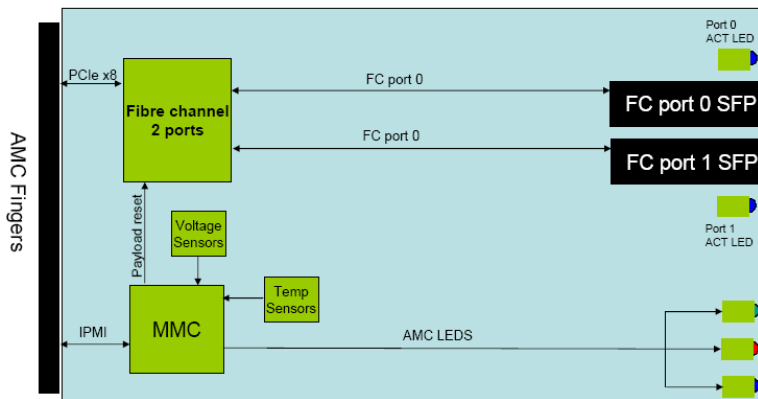
### **AdvancedMC FIBRE CHANNEL ADAPTERS**

The SANBlaze SB AMC55 Dual Channel, 4 Gbit Fibre Channel AMC adapter provides maximum performance and low latency Fibre Channel device connectivity to embedded systems based on AdvancedTCA and MicroTCA. The SB AMC55 has two independent 4 Gbit Fibre Channel ports.

The Dual channel, 4Gbit AMC host adapter provides redundant configurations and high availability solutions for Storage Area networks (SANs). The SB AMC55 can auto negotiate down to 1 and 2 Gbit operation to assure backward compatibility with existing 1 and 2 Gbit SAN infrastructures and meets the requirements of today's 4 Gbit SANs.

### **ARCHITECTURE**

The SANBlaze Fibre Channel AMC product family is based on industry standard ARM technology and incorporates LSI Logic's Fusion-MPT architecture. Fusion-MPT provides a single binary device driver for Fibre Channel, SCSI and emerging interface technologies such as Serial ATA and others. Thinner drivers allow for better and more versatile performance while adding value at the firmware level.



**Board Block Diagram**

**Technical Specifications:**

<b>FC Processor</b>	<b>LSI 949E</b>
<b>AMC Power</b>	<b>6 watts</b>
<b>MTBF</b>	<b>&gt; 200,000 Hours</b>
<b>Environments</b>	
<b>Operating</b>	<b>0 - 60°C , 5-90% non condensing</b>
<b>Storage</b>	<b>-45°C to +105°C , 5-90% non condensing</b>

**Ordering Information:**

<b>Part Number</b>	<b>Description</b>
<b>SB-AMC55F</b>	<b>2 Port AMC Fibre Channel Adapter Full Height</b>
<b>SB-AMC55M</b>	<b>2 Port AMC Fibre Channel Adapter Mid Height</b>

For more information please visit the SANBlaze web site at: [www.sanblaze.com](http://www.sanblaze.com) or send email [info@sanblaze.com](mailto:info@sanblaze.com).



SANBlaze is a leading provider of storage solutions for embedded systems, delivering high performance enterprise storage technologies and functionality to the embedded computing market. Our AMC, PMC, ATCA and cPCI board level storage solutions provide maximum design flexibility, ease of integration and cost effectiveness.

SANBlaze Technology, Inc. • 5 Clock Tower Place, Suite 100 • Maynard, MA. 01754 • Ph: (978) 897-1888 • Fax: (978) 897-3171