

Product Highlights

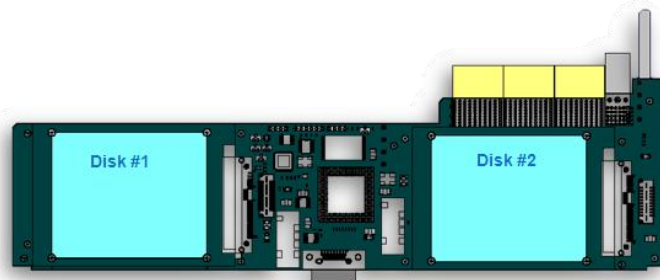
- Advanced RTM Board
- 3Gb SAS Expander
- External Molex SAS port (x4)
- Pass-thru Console, LAN Management
- 2 internal drives (optional)
- Use SAS, SATA or SSD disks

Key Applications

- ATCA In chassis disk expansion
- SAS-to-SAS bridging
- Diskless servers

Features

- ATCA PICMG 3.0, Rev 2.0
- AMC.3, storage signaling option
- Front panel status LEDs
- SAS link speeds 3.0Gb/s
- MMC Configurable
- Non-volatile memory for initialization
- Customizable FRU data
- Compatible with Advanced RTM
- Hot swappable
- RoHS compliant
- Integrated IPMI, Rev 1.5 and 2.0
- OEM option, custom zone-3



Advanced TCA®

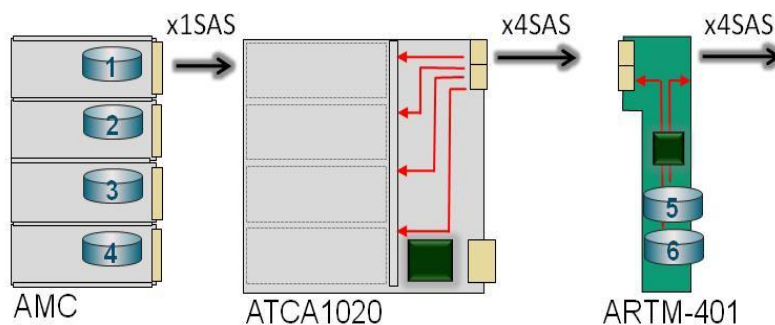
SAS Expander, Dual disk drives

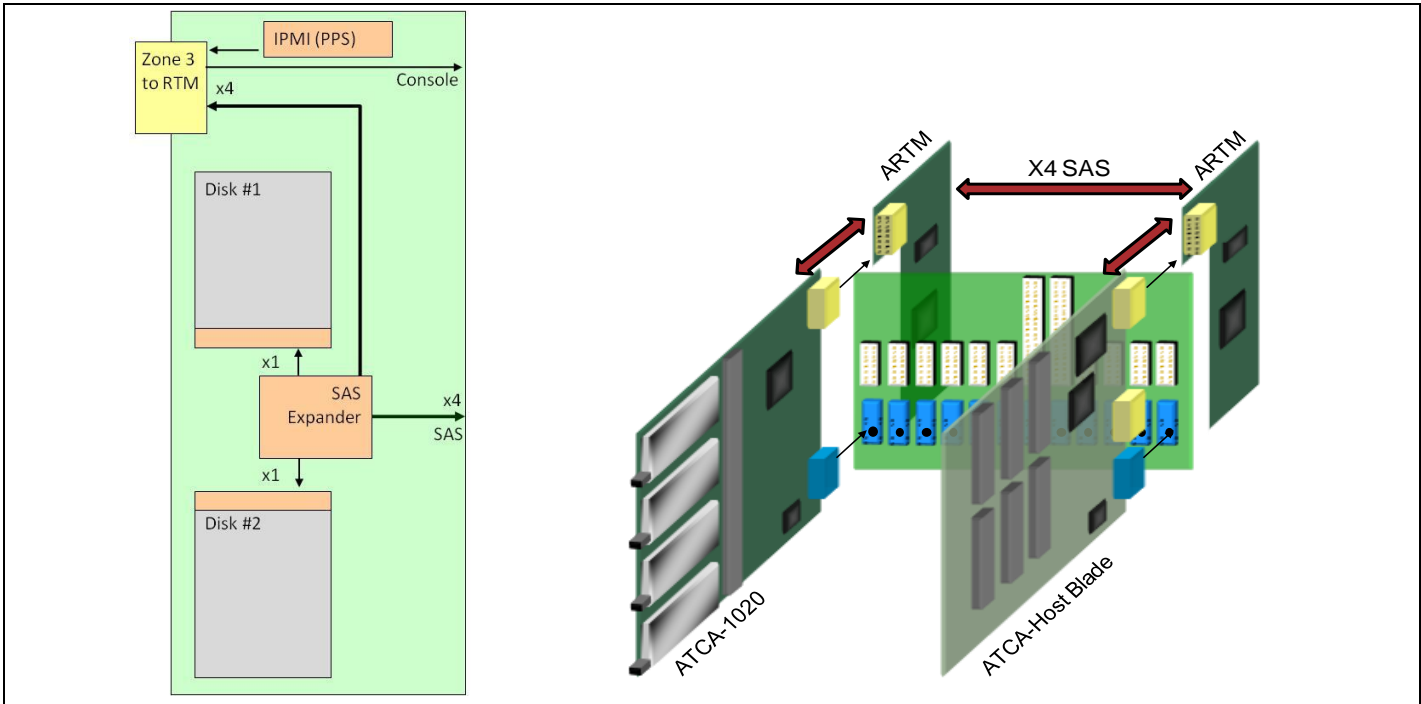
The **SANBlaze SB-ARTM401** is an Advanced Rear transition module (ARTM) that features a SAS expander which provides a storage I/O path between the front ATCA board and rear I/O access panel. The front ATCA board connection conforms to the 3-row Advanced RTM standard. Optionally, the module may be populated with up to two (2) SAS, SATA or SSD 2.5" disk drives.

On the rear panel, the SB-ARTM401 utilizes a 4 lane connector that allows direct connection to an external JBOD, RAID array hardware or secondary ARTM. The x4 connection is full duplex, providing maximum aggregate data throughputs of 24 Gb per second.

The SB-ARTM401 module accommodates up to two disk drives which mount directly to the module, if the host chassis is properly cooled. This configuration permits valuable in-chassis capacity expansion, ranging from 80-300GB.

The SB-ARTM401 may also be used to construct an in-chassis JBOD when paired with the SANBlaze ATCA-1020 JBOD.





ARTM401 Block Diagram and Deployment Concept

Technical Specifications:

REAR PANEL CONNECTIONS	MANAGEMENT
X4 SAS connector on rear panel, Infiniband style RJ45 LAN pass through to ATCA zone 3 RJ45 console pass through to ATCA zone 3	Intelligent Platform Management Controller (IPMC) Dual Redundant IPMB A/B Interfaces E-Keying Features
EXPANSION FEATURES	LEDS AND SWITCHES
Up to two Fixed Disks, 2.5" form factor Each disk dedicated X1 link, 1.5Gb or 3Gb Technology SAS, SATA or SSD Advanced RTM Module (3 row connector) IPMP_L Interface between the carrier and ARTM Modules Console and LAN pass-thru to front ATCA	ARTM Failure / Out of Service ARTM LED 2 User Defined ARTM LED 3 User Defined
ORDERING INFORMATION:	PHYSICAL
SB-ARTM401	ATCA PICMG 3.1 Form Factor 6U x 70mm Power Requirements – 25 Max watts

For more information please visit the SANBlaze web site at: www.sanblaze.com
or send email info@sanblaze.com.



SANBlaze is a leading provider of storage solutions for embedded systems, delivering high performance enterprise storage technologies and functionality to the embedded computing market. Our AMC, PMC, ATCA and cPCI board level storage solutions provide maximum design flexibility, ease of integration and cost effectiveness.

SANBlaze Technology, Inc. • 5 Clock Tower Place, Suite 100 • Maynard, MA. 01754 • Ph: (978) 897-1888 • Fax: (978) 897-3171