

DATASHEET

Key Applications

- Ideal tool for Fibre Channel HBA, switch, infrastructure and software developers.
- Physical port testing requirements
- Product Development
- QA and Test Applications
- Boundary and exception testing
- Performance and stability testing
- Error Injection

FEATURES

- 12 or 24 Port, 4G Fibre Channel Configuration
- 16 or 32 GBytes of System RAM
- Can create multiple target scenarios
 - Up to 500 “virtual” disks or Tapes per port
 - Up to 512 LUNS per target
 - 1 - 125 Targets per port
- Scripting allows for controlled testing
- Save hundreds of predefined configurations on internal 300G hard drive
- Scripting library provide predefined and editable tests
- Simple and easy to use Web based configuration



SANBlaze GargantuLUN™

The SANBlaze GargantuLUN Fibre Channel target emulation system provides all of the innovative features and benefits of the SANBlaze VirtuaLUN product line, with added port density. The product delivers an extremely cost effective approach to Fibre Channel device testing, replacing the need for physical arrays and/or JBODS with a software based approach to target configuration. The product emulates and stores multiple Fibre Channel Disk Drives configurations for product development, QA and test requirements. The system reduces the need to deploy large farms of physical “scratch” disks or tapes, providing port density, high performance, non-volatile media at a fraction of the cost of physical disks or tapes.

The ability to add latency, have differing read/write sizes, inject a wide variety of errors and save and restore multiple disk configurations provides a flexible and invaluable tool for development, test and QA labs.

The GargantuLUN system is available in 2 configurations running Fibre Channel speeds of 4G. The systems are available with 12 or 24 Ports. Each port can be configured to present from 1 to 500 virtual “disks” or tapes, each with configurable size and characteristics. System memory options are 16 or 32 Gbytes.

The SANBlaze VirtuaLUN occupies a 3U rack space. An integrated, easy to use web based interface allows configuration, re-configuration, error injection and monitoring from any remote system.

GargantuLUN™ Fibre Channel Target Emulator



Technical Specifications:

Fibre Channel Features

- 12 or 24 1,2 or 4 Gbps Fibre Channel Ports
- Auto Link-Speed Negotiation
- Auto Topology Negotiation
- 1-125 Targets per port
- Virtualize 500 disks per port
- Up to 512 Targets per port in Point to Point Mode
- Editable WWNN and WWPNN
- Fibre Channel Error Counters and Statistics

Management Features

- Gig-E RJ-45 Port for FTP, TELNET and WEB Browser Access
- Serial DB-9 Connector for terminal Access
- Field - Updatable
- Keyboard/Monitor Connections for Local Command Line Management

Virtual Disk Features

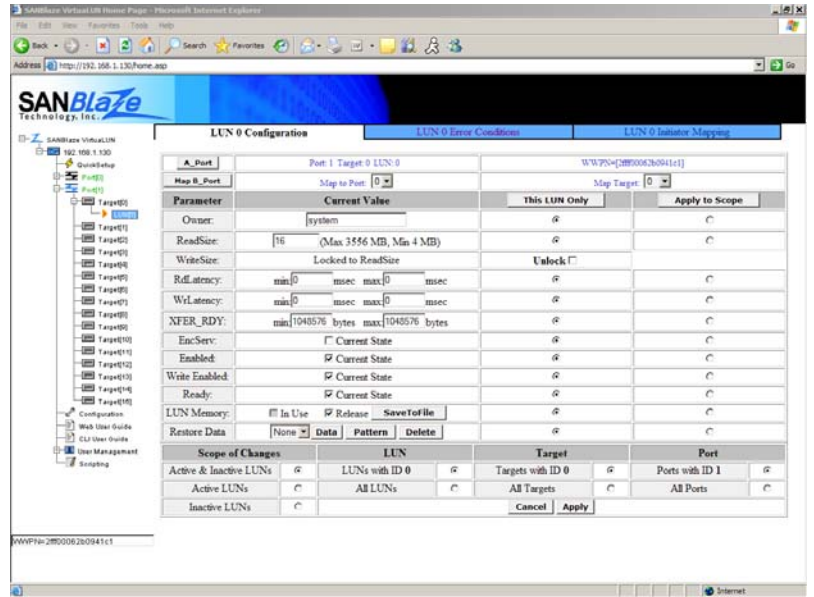
- Drive Mapping
- Variable Read/Write Size
- None or Variable Latency
- Multiple Error Conditions
 - Busy
 - Drop
 - Queuefull
 - CheckCondition
 - Read Under/Over
 - Write Under/Over
 - WriteProtect
 - Not Ready
 - Link Reset
 - Delay

Physical Features

- 3 U Rackmount Chassis
- Triple redundant power supplies
- Width: 17.7 in (450mm)
- Depth: 25.5 in (647mm)
- Height: 5.2 in (132mm)
- Weight: Approx. 70 lbs.

Environmental

- Operating Temperature: 10 to 35°C
- Humidity: 8 to 90% Non Condensing



Ordering Information:

Part Number	Description
SB GLUN4-12-16	12 Port GargantuLUN, 16G RAM
SB GLUN4-12-32	12 Port GargantuLUN, 32G RAM
SB GLUN4-24-16	24 Port GargantuLUN, 16G RAM
SB GLUN4-24-32	24 Port GargantuLUN, 32G RAM

For more information, please visit the SANBlaze Website at:

www.sanblaze.com or email info@sanblaze.com



SANBlaze Technology, Inc.
5 Clock Tower Place, Ste 100
Maynard, MA 01754

Tel: (978) 897-1888
Fax: (978) 897-3171