

DATASHEET



FEATURES

- Simulated iSCSI Devices
 - Disks drives
 - Tapes
 - Disk arrays
 - Tape Libraries
- Configure Multiple iSCSI operating parameters
- Configure iSCSI security parameters
- Configure and display iSCSI session information
- Generate/Consume Multiprotocol traffic such as:
 - UDP
 - FCoE
- Frame size control (MTU)
- Configurable MAC address
- Near line rate performance
- Launch via web or CLI script
- Save/load configurations
- Packet Capture and Decode

Resources per Port

- Up to 64 Targets per port
- Up to 512 LUNs per port (Disk and/or Tape)

Port options

- 10G Ethernet Ports: 2, 4, 8 or 12 Ports
- Can combine with Fibre Channel, SAS or FCoE ports for multifunction configurations

Overview

The **SANBlaze iSCSI VirtuaLUN** is the key piece of test equipment for anyone developing products supporting iSCSI. The VirtuaLUN feature set provides a unique set of functions applicable in all aspects of a product lifecycle; from development to design validation and test and QA. The ability to emulate iSCSI targets with a wide range of configurable attributes provides engineers with a flexible, scalable tool to simulate real Data Center Ethernet and SAN environments, at a fraction of the cost of real devices.

The VirtuaLUN provides full control and programmability of SCSI parameters, providing unique storage test conditions for network testing and development.

An iSCSI target can be a disk, a tape, or a collection of each, such as a tape changer or storage array. Easily configurable target environments with optional storage profiles can be edited and saved for reuse. Test engineers will appreciate the easy “3-click” quick start capability to either generate or terminate I/O traffic. Multiple error conditions and triggers allow for complex error injection. Custom command generation and predefined tests provide simulated host environments. Users can build up a library of test cases which can be easily retrieved and leveraged later in scripts to validate adapter, switches and storage.

Some Typical Uses:

Validate iSCSI HBA (Host Bus adapter)

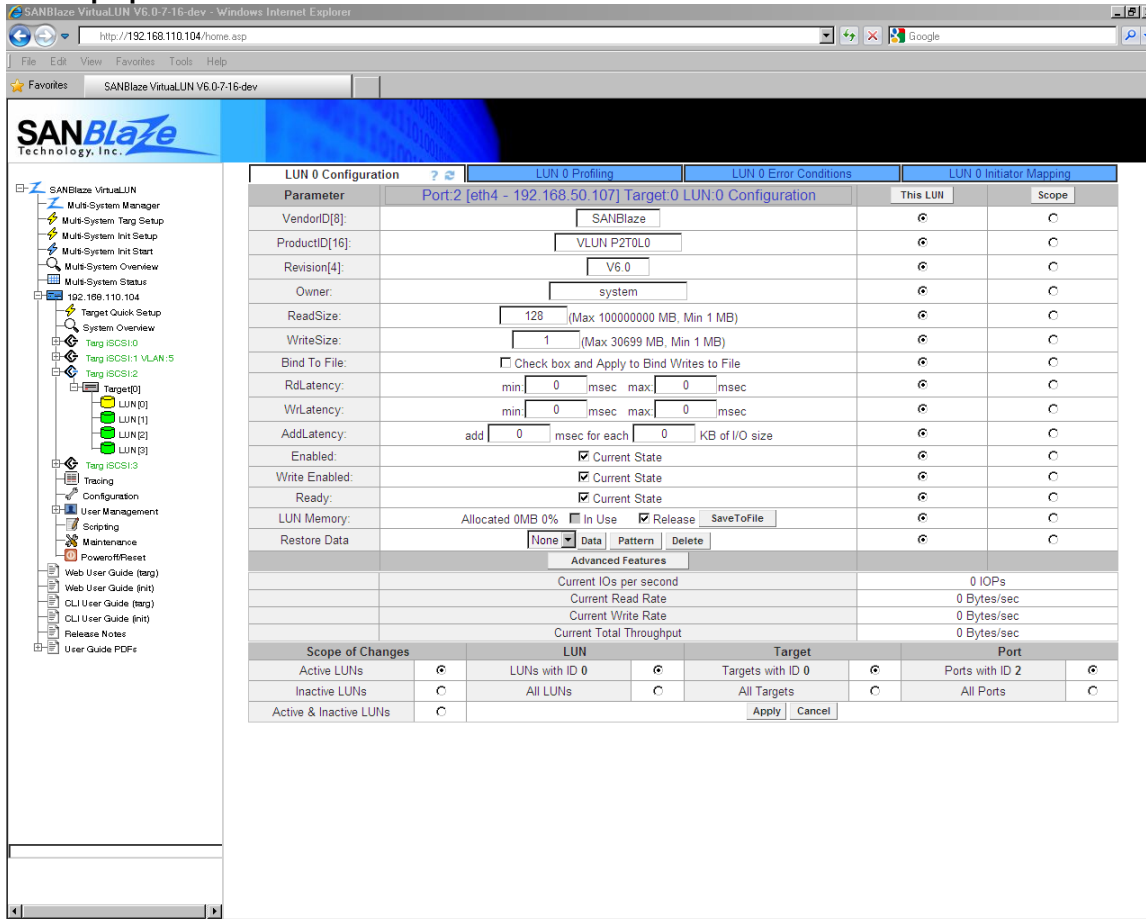
Performance testing

Error handling Testing

Scalability Testing such as:

- Max Targets capability
- Max LUN capability
- Max I/O (queue full)
- Max capacity (volumes)
- Max and Min Throughput
- All CDB (norm, vendor unique)
- Persistent Reservations
- Failover Testing

Multiple disk and/or Tape parameters:



Ordering Information and options:

| Part Number | Description |
|------------------------------------|--|
| SB-VLF-I2FOSO-M-SW | 10G iSCSI VirtuaLUN |
| I = iSCSI ports | 2, 4, 8 or 12 |
| F = Fibre Channel Ports | 0 or 2, 4 |
| S= SAS Ports | 0 or 8 |
| M= Memory | 8 or 32G |
| SW – Software | T= Target Mode, I = Initiator Mode (not yet available) TI= Both (not yet available) |
| Example: SB VLF-I4F0S0-32-T | iSCSI VLUN with 2 iSCSI Ports, 32 Gbytes of memory – Target only |

For more information please visit the SANBlaze web site at: www.sanblaze.com or send email info@sanblaze.com.



SANBlaze Technology, Inc. is a pioneer in SAN Emulation technologies and a leading provider of solutions for embedded systems. SANBlaze emulation products provide storage engineers, test and QA teams with scalable, high performance and configurable emulated environments for Fibre Channel, iSCSI, SAS and FCOE targets and initiators.

SANBlaze Technology, Inc. • 5 Clock Tower Place, Suite 100 • Maynard, MA. 01754 • Ph: (978) 897-1888 • Fax: (978) 897-3171