



Issue:

The cost and availability of large storage arrays and tape changers for interoperability, development and testing needs.

Solution:

SANBlaze emulators utilizing array and tape profile emulations in many cases can be deployed in place of real arrays and tape devices.

Benefits:

Cost: The ability to easily emulate the behavior of large arrays and tape devices allows for interoperability testing and development to be done at full speed and at a fraction of the cost of the real devices.

Flexibility: The ability of the SANBlaze system to emulate many different Array configurations, performance levels and error conditions provides a lab with unlimited configurability, flexibility and options.

Time: Preformatted, preconfigured and saved arrays and array configurations allow for target test scenarios to be rapidly changed via software control, eliminating the time associated with physical reconfiguration of real devices.

Using a SANBlaze Target Emulator to emulate Arrays and Tape Changers

What is an Array Profile?

A SANBlaze Array Profile is a tool that may be used to mimic the behavior of a storage array or tape device, including multiple device types under a single target. SANBlaze target profiles attempt to approximate the performance of the real device by analyzing basic sequential and random seeks, small IOs and large IOs.

The profile also contains all the SCSI level responses:

- All VPD inquiry pages
- All Diagnostic pages
- All Mode Pages

such that the profiled device will appear to the host as a “clone” of the real device.

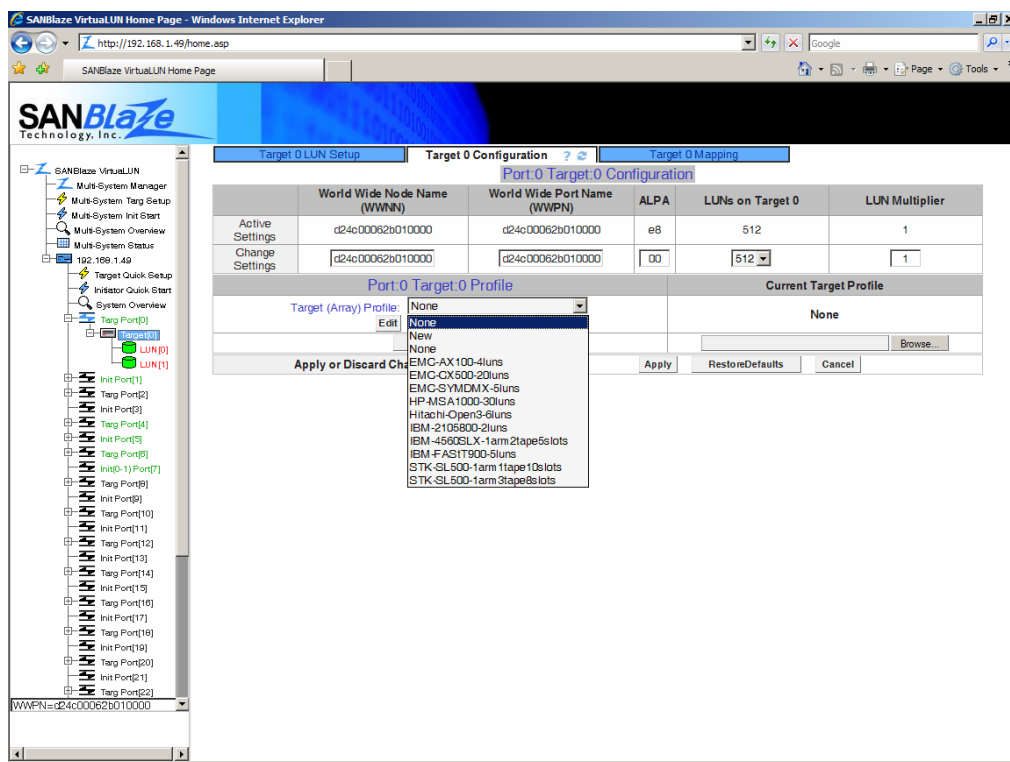
Users may modify the responses of a profiles array or tape library. Any individual parameter can be edited, changed or modified to reflect testing or simulation requirements, such as errors or performance.

Fibre Channel or SAS behavior, while not part of the profile, can be modified after applying the profile using the Port Action page.

What an Array profile can not do:

The SANBlaze profile, while able to emulate an array completely enough to work under the vendor’s own multipathing and virtualization software, is not a real storage array device. Any hardware related behavior such as cache size, firmware revisions and unspecified SCSI behavior can not be emulated.

Configuring Array Profiles – Applying an Array or Tape Library profile is as simple as selecting it from a drop down menu:



Importing Additional Array Profiles - SANBlaze provides an auto-profiling utility that allows the user to automatically generate and import a new profile any FC or SAS device that is connected to the system. This feature allows customers to add their own devices to the profile library for future emulation use.

Supported Profiles - SANBlaze provides predefined profiles for the following devices:

EMC	AX100
	CX500
	Symmetrix
HP	MSA1000
Hitachi	
IBM	4560SLX
	FAST T900
STK	SL500