



Issue:

Testing a large number of initiators is cumbersome, expensive, and time consuming.

Solution:

SANBlaze emulators can be configured with up to 125 initiators per port. A maximum of 3000 initiators can be supported in a SANBlaze 24 port Fibre Channel System.

Benefits:

Cost: The ability to create hundreds of devices at a fraction of the cost of implementing and maintaining traditional initiator/host systems.

Flexibility: The ability of the SANBlaze system to emulate many different initiator amounts, traffic loads, performance levels and error conditions provides a lab with unlimited configuration options.

Time: Saved configurations, predefined tests and full scripting support, allow for test scenarios to be rapidly changed via software control, eliminating the time associated with physical reconfiguration and coordination of real host devices.

Using SANBlaze Initiator NPIV to emulate a large number of hosts

SANBlaze emulators can be used for scalability testing where large numbers of initiator devices are needed. By utilizing the NPIV function available on SANBlaze Fibre Channel systems, up to 125 Initiators can be emulated per port. This feature allows for up to 3000 devices to be emulated in the SANBlaze Gargantulun 24 Port emulator.

Advanced features such as:

- Custom Command Builder
- Programmable Login Parameters
- Pre-define Load Tests
- Read/Write/Compare Tests

allow the system to be customized to emulate a large range of host and initiator system behavior.

Some common uses include:

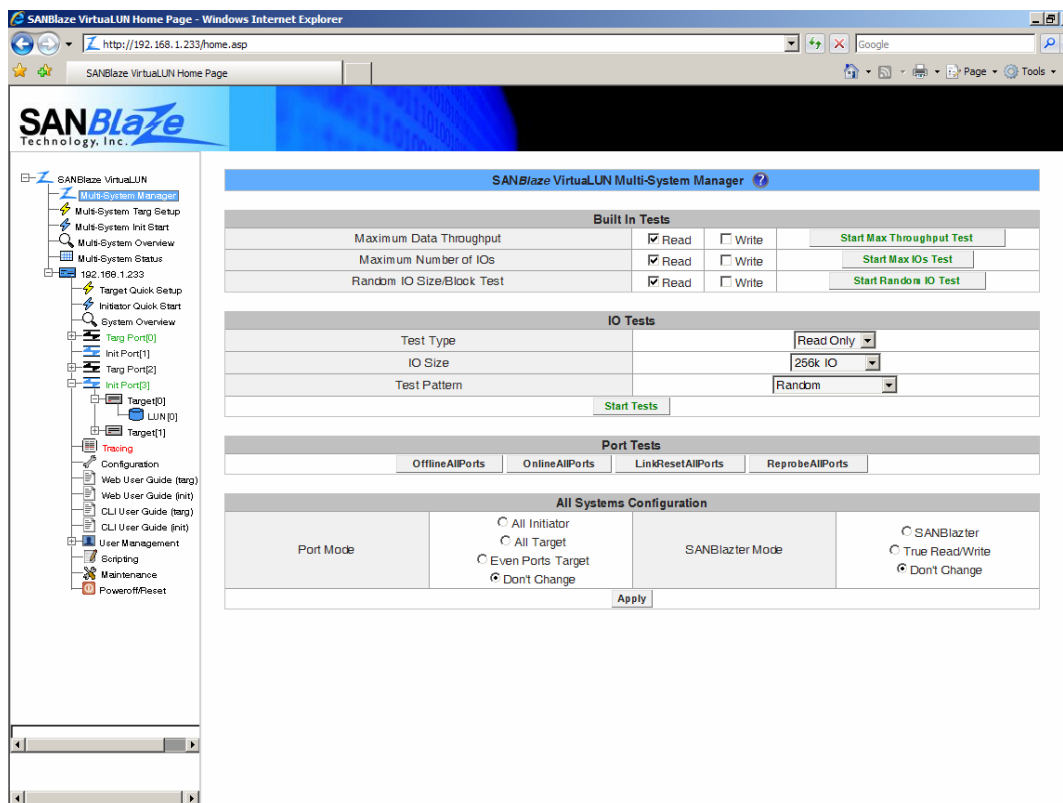
Target Testing- All initiators can probe for connected target devices. Read/write/compare IO can be run from all initiators to all connected targets with one click of the mouse.

Switch Testing- Test a switch's ability to handle logins from thousands of initiators. Test a switch's ability to zone thousands of devices.

Software Testing- Verify management software's ability to discover and manage many initiators.

Tape Testing- Built in tape commands and scripts allow the system to be used as a tape exerciser.

Running Tests – Pre-defined and easily configurable test scenarios for maximum throughput, maximum IO's and random IO's can be started on one or many SANBlaze systems with a single mouse click.



Scripting Support – All web based testing can be scripted with an easy to use and clearly defined Command Line Interface, or using the innovative web-based script builder. Tests can then be executed via command line, remotely or using the web interface. Predefined script examples are included.

Example Supported IO Commands:

Inquiry	Inquiry VPD
Modesense	ReportLUNS
Request Sense	TestUnitReady
MoveMedium	Read 6,10,12,16
Start Unit	ReadCapacity 10,16
Stop Unit	Write 6,10,12,16
WriteSame 10,16	
PersistResIN	PersistResOUT
Reserve	Release