

Step 1: Unpack All Contents

Open the shipping container(s) and unpack all contents. Make sure you have the following:

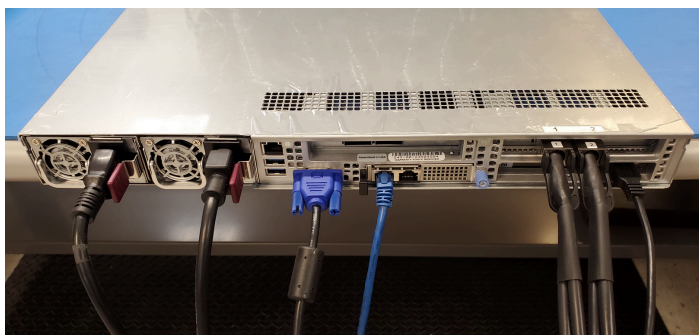
- SBExpress-RM5 PCIe NVMe Test System (1)
- SANBlaze host server (1) (not included if you are using your own host server)
- Two host cards required for the system:
 - x16 PCIe host interface module (1)
 - 4-port USB interface (1)
 These cards are shipped with the system or as add-on cards to be installed in the field
- PCIe cable(s) (2)
- Power cord (2)
- USB cable (1)



SBExpress-RM5 Dual Port PCIe NVMe SSD Test System & Host Server

Step 2: Install the adapter(s) in the host system

If you are using a SANBlaze host system, the adapters will already be installed for you and you can skip to Step 3. To install the adapter(s) in your own host system, see the figures below for a sample installation of a SANBlaze host system for Gen5 to guide you for your own installation.



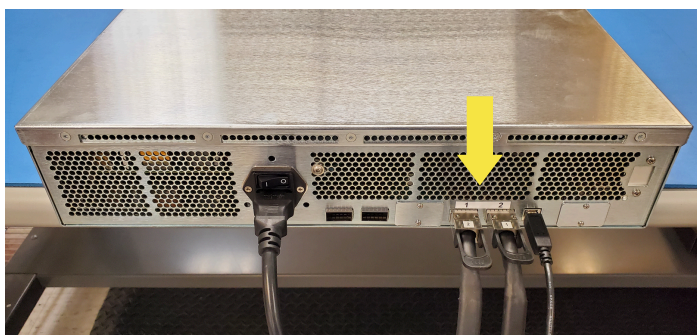
SANBlaze NVMe Gen5 Host System

<< Host System Populated with Cables

Step 3: Connect PCIe Cables Between the Host System and the SBExpress-RM5 NVMe SSD Test System

Connect the PCIe cable(s) from the host system (Step 2 above) to the SBExpress-RM5 NVMe Test System (shown below). Please note the port numbering labeled on each system.

PCIe Cables on SBExpress-RM5 Test System



SBExpress-RM5 Test System Populated with Cables

PCIe Cables on SBExpress-RM5 Test and Host Systems



SBExpress-RM5 Test and Host Systems Populated with Cables

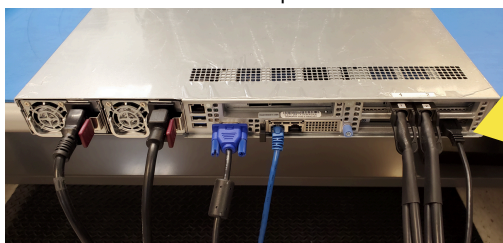
Step 4: Install Drives in Front

All drives are installed through the front panel. Up to sixteen single or dual port drives can be installed in the SBExpress-RM5 NVMe SSD Test System. See the LEDs section in the *SBExpress-RM5 NVMe SSD Test System User's Guide* for the behavior of the NVMe drives and SBExpress-RM5 Test System.

Note: All drives must be installed before the system is powered on so that they are discovered properly.

Step 5: Connect the USB to the SBExpress-RM5

Connect the USB cable to the SBExpress-RM5 NVMe SSD Test System (see arrows below). **Note:** this step must be done *before* powering on the system.



Gen5 Host Server USB Port to Connect to the SBExpress-RM5



SBExpress-RM5 USB Port for Connecting to Server

Step 6: Connect the Power Cord

Connect the power cord and power on the SBExpress-RM5 NVMe SSD Test System using the power switch in the back of the unit. Then, power on the Gen5 host server. **(If you are using the SANBlaze host server, press the green checkmark on front of the host server to power on.)** The host server will handshake over the USB cable to turn on the power to the SBExpress-RM5 NVMe SSD Test System.

Step 7: Configure the SBExpress-RM5

Configure the SBExpress-RM5 through (a) a web browser or (b) SSH session or (c) using the Ethernet port (10/100/1000 auto sensing) on the front panel. All three methods (a,b,c) are detailed below. If you choose to connect via Ethernet, the software uses the 'eth0' interface provided under Linux. Please connect to the **eth0** interface of your target machine. If the ports are not labeled, note that the left Ethernet port is **eth0** and the one to the right of it is **eth1**.

Connect using Ethernet

(a) Connect Via a Web Browser

Use a Web Browser to connect to the SBExpress system by entering the IP address in the URL window using these default parameters:

IP Address: **192.168.1.222**
 Default Gateway: **192.168.1.1**
 User Name: **system**
 Password: **SANBlaze** (case-sensitive)

Note that the IP address is displayed on the front LCD panel.

(b) Or...Connect via SSH

Open a secure shell (SSH) and connect to the IP address **192.168.1.222**

Note: If your host is not in the `/etc/hosts` file, the system will take a few seconds to reply.

User Name: **vlun**
 Password: **SANBlaze** (case-sensitive)

Upon successful log-in, issue the **su** command to get super user access.

```
# su
Password: SANBlaze
```

Change the IP address

Once the SBExpress-RM5 system has been accessed, the IP address, system name, and gateway can be changed using the main web page.

Direct Connect w/ Monitor

(c) Or...Connect via the Command Line

In addition to the Ethernet based connectivity methods, you can access the SBExpress-RM5 system via the command line using a monitor and keyboard connected to the unit.

Once connected, issue the **su** command to get superuser access.

```
# su
Password: SANBlaze
```

Change the IP address at the CLI

Run the network config script:

```
# /virtualun/scripts/config_network.sh
```

The script will then prompt you for all the necessary network settings.

You can now connect to the SBExpress-RM5 system via a web browser.

Step 8: Open the SBExpress-RM5 User Guide

Once you have the system up and running, refer to the *SBExpress-RM5 NVMe SSD Test System User's Guide* for information on LEDs, Fans, Power Supply, running tests in the software, and configuration options for the system.